

STEALTH Three Sectored Susan™ Installation Guide

Before starting to assemble, please check the packing list.

Before unloading, cover your lifting straps with a soft, colorless fabric to prevent damage to the paint.

1. Position monopole base as close to the foundation as possible (see example A). Run the coax through the monopole, allowing for 10 feet out of the bottom (see example B). Also, run as many lengths of rope as there are spaces for future antennas.



2. Bolt the Three Sectored Susan™ to the top mating flange of the monopole using the (6) 1"x7" flange bolts, lock washers and nuts. Mount grounding kits to bulkhead. **Use provided shim kits to ensure concealment section is mounted plum.**



3. Using the custom antenna mounting brackets, (based upon the make and model of your antennas) mount the antennas in the proper section on the Three Sectored Susan™. **Check antenna azimuth.**



4. Carefully, using flexible coax, or 90 degree adapters, (**not included**), install the coax cable into the Three Sectored Susan™. The ends of the coax should be a minimum of 14" below the mating flange. This is to allow connections to any jumpers. Pad the cables where they pass through the bulkhead to prevent wear due to vibrations. Use electrical tape or cable ties to fasten the cables together (**not included**).



5. Carefully slide the StealthSkin™ V cylinders onto the steel spine. The cylinders are labeled top, middle and bottom. Mount the bottom cylinder first, then middle, then top. You will need to align the holes on the cylinders with the tapped holes in the bulkheads. Using the 5/16" x 2" screwhead bolts, fasten the cylinders. **DO NOT OVERTIGHTEN BOLTS!!!**



6. Install the ball & truck assembly by screwing the fitting into the threaded hole on the top cap of the Three Sectored Susan™.



7. Carefully, fasten your lift harness through the access port of the monopole and attach the harness to the crane. Also add a lead to the top of the TSS™ to avoid bending the top. Begin to lift. You do not need to lift the monopole more than a few feet above grade. Raise and hold above foundation.



IMPORTANT!!! Remember to thread the flag rope through the truck assembly prior to raising the pole.

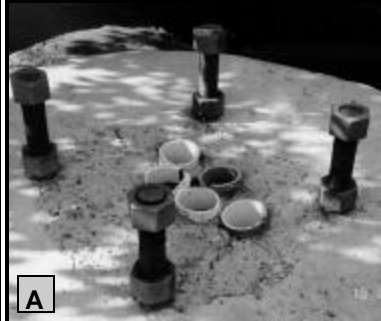
It is recommended that you connect the monopole sections together at each slip joint, utilizing the jacking nuts with a steel plate.

Please Note: For all antenna installations, a 1 1/2" spacing from the pipe mast to the back of the antenna. Failure to comply to this spacing could cause the cylinders not to fit properly.

Installation Guide

page 2

8. The foundation should have been laid with conduit for coax (see example A). Carefully run the coax from the bottom of the monopole through the foundation. As the crane lowers the monopole, pull the coax through the conduit in the foundation, being very careful not to twist or cut the coax (see example B).



9. STEALTH recommends caulking the seams between the StealthSkin™ V cylinders with a PREMIUM SILICON CAULK to prevent leakage from inclement weather.



10. After tightening the bolts on the base flange of the monopole's foundation, you are ready to raise the flag.



INSTALLATION TIPS

- Caulk cylinders *after* verifying antenna azimuths.
- Tap hole for cleat prior to lifting pole off of the ground.
- When fastening the nuts on the cylinders, use the same rotational technique as changing the tire on a car.
- Use industrial foam for padding the coax cables.
- Color code and/or number the coax cables/ropes used.
- Make sure to thread flag rope through the truck assembly *before* raising the flag.
- Be sure to level the concealment section on top of the monopole using the provided shim kit.
- Attach cleat at any elevation. Drill and tap into monopole.

PLEASE READ THE MONOPOLE MANUFACTURER'S INSTALLATION GUIDE. THE GUIDE IS INCLUDED WITH YOUR MONOPOLE. If you have not received this guide, please contact STEALTH immediately.

You have successfully installed our Three Sected Susan™! If you have any questions, please call 1-800-755-0689 (ext. 17).

(This manual is designed to assist in a typical PCS installation. Your installation may vary.)